

ENHANCED TRANSITIONS PRIMARY TO SECONDARY SCHOOL

Parent and Carer information



Transition – The process of moving schools or key stages within schools

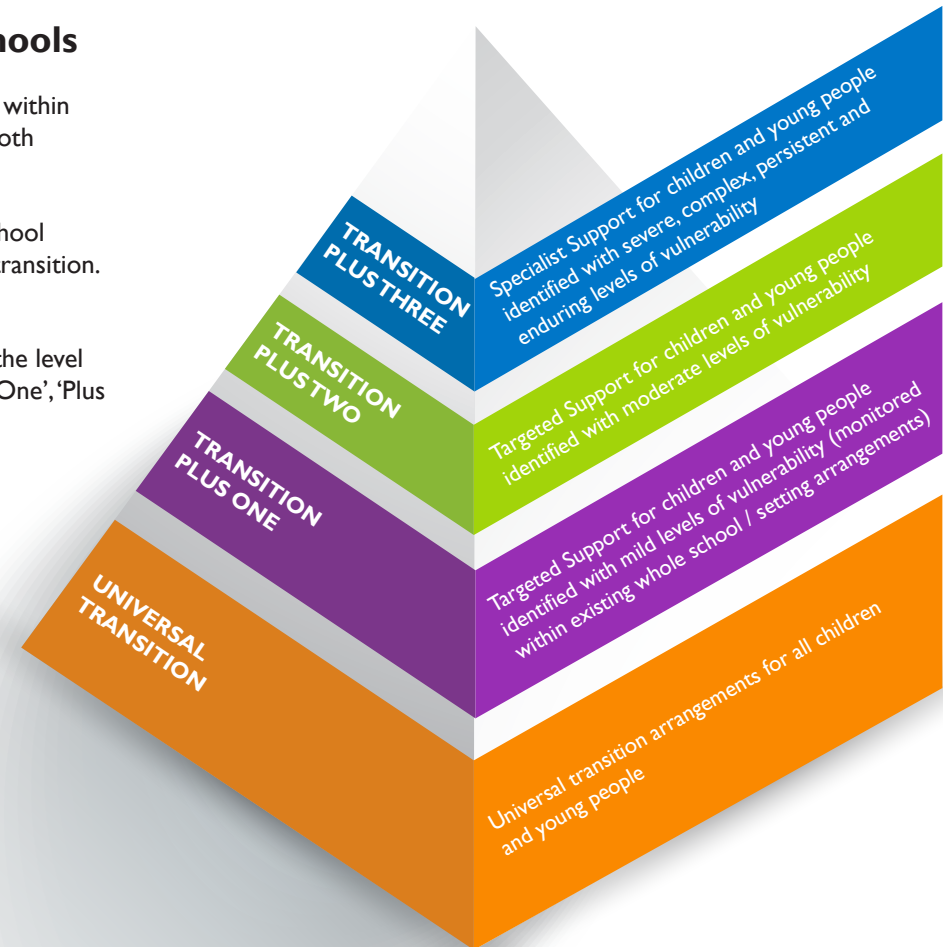
As a parent or carer it can be a worrying time when your son or daughter is due to move school or move within school. Working together as parents and professionals we will always aim for a positive, successful and smooth transition for all our young people.

The majority will take the move in their stride but a number will need closer monitoring within existing school arrangements. A few might find the move more difficult and need some extra steps to help them with the transition. The receiving school will plan to support their needs when they start the school.

In Plymouth we have an **Enhanced Transition Framework**. This provides a shared way of talking about the level of support needed by children during transitions. It uses the codes 'Universal' or 'Enhanced Transition Plus One', 'Plus Two' or 'Plus Three'. This is represented in this diagram.

Useful tips for parents / carers

- Encourage your child or young person to look at the move as a natural and positive part of their development. Often they can be less worried about the move than their parents / carers.
- Be positive yourself to try to avoid your young person picking up on your concerns making them worry.
- Listen to your child or young person's wishes and preferences, involving them in the decision on which schools to visit and apply to.
- Remember young people often do not want to be seen as different from others in their year group.
- Take it one step at a time.



What can I do if I am worried about my child / young person's transition?

Talk about this with the teacher, SENCO (Special Educational Needs Coordinator) or their lead professional. You can decide with them if they will need an enhanced transition.

If I am still worried that an appropriate transition will not be provided, what can I do?

If after discussions you are concerned with what will happen, Plymouth Information Advice and Support (PIAS) can discuss your concerns with you and, if needed, provide you with independent support to work through concerns. Visit www.plymouthias.org.uk or call 01752 258933 or 0800 953 1131

YEAR 5 APRIL
Grammar School application information received

YEAR 6 SEPTEMBER
Make decision on schools to consider and attend open events

YEAR 6 MARCH
Usually 1 March - Parents notified of school place

YEAR 6 MAY - JUNE
New school arranges enhanced transition meeting / visit

YEAR 7 SEPTEMBER
Start new school and review transition in early October

YEAR 5 JUNE - JULY
Information about how to apply for secondary school Next Step booklet

YEAR 6 31 OCTOBER
Deadline for school application

YEAR 6 JULY
New school visit for all pupils

Where can I find the Enhanced Transition Framework?

On the Plymouth Information, advice and Support for SEND (PIAS) website at www.plymouthias.org.uk/resources/files/publication_17_plymouth_framework_for_enhanced_transitions_v2_march2016.pdf

Useful Websites:

Plymouth Online Directory: www.plymouthonlinedirectory.com
Moving to Secondary School: www.learningdisabilities.org.uk/our-work/employment-education/moving-on-to-secondary-school/?view=Standard